

RECOMMENDED TOOLS

- Fine tooth blade hand saw
- Silicone Sealant
- Adhesive
- Drill and screwdriver
- Tape Measure
- Pencil

Panels **MUST** be checked for colour shading differences, different batch numbers, flaws, defects or damage prior to installation. To fully inspect the panel surface, the protective polycoating should be removed. Colour variation can occur between different batches - a batch number can be found on the back of each panel. Once installation has been commenced, the panels are deemed to have arrived in perfect condition – any of the above reported after installation will not be covered by your warranty. Please consult our warranty document for further details.

Panels **MUST NOT** be exposed to direct sunlight.

1. CONDITIONING AND STORAGE

- Prior to installation, it is strongly recommended that panels are conditioned in the room (or similar environment) where they will be installed for 48-72 hours. Panels should never be stored outside and should not be exposed to direct sunlight. **polyPANEL** must always be stored flat and horizontal to prevent bowing, and must not be rested at an angle against walls, or between supporting structures, e.g. tressels.

2. WALL PREPARATION

- Panels can be bonded/fixd to most surfaces including tiles, concrete, plaster, plasterboard, and chipboard/ plywood walls providing they are sound. Alternatively softwood grounds can be applied over poor surfaces, set at 60cm vertically and 80 cm horizontally (see fig.A), or as close to these settings as is appropriate for the job – it's better to have an additional ground than too few.
- To ensure your **polyPANEL** is properly bonded, ensure all surfaces to which adhesive will be applied are clean and dry.

3. CUTTING PANELS

- Appropriate PPE such as safety eyewear should be worn when cutting panels.
- Measure and mark your required cutting line, then cut using a fine-tooth blade hand-saw, decorative face up.
- When measuring distance from walls, or passed shower enclosures, allowances should be made for the thickness of PVC profiles and the space between walls and profiles. Sizes are shown below:

PVC SECTION RANGE

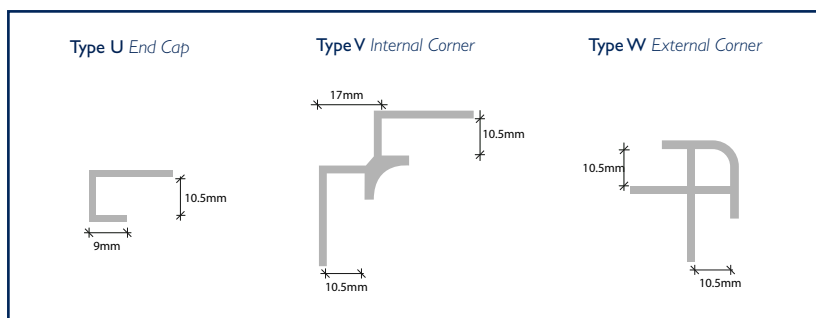
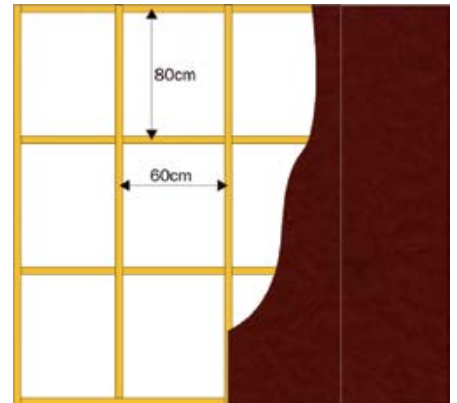


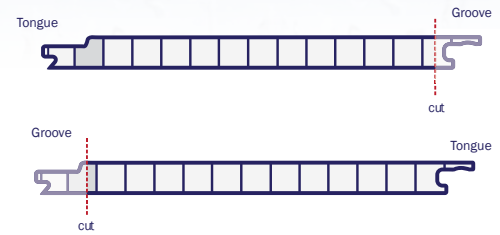
figure A.



4. FITTING PANELS AND PROFILES

- polyPANEL** is supplied with a tongue and grooved edge as standard. When fitting panels into corner and end cap profiles, the protruding tongued or grooved edge should be cut off (see fig. B).
- The first profile – normally start with a Type V Internal Corner or Type U End Cap – should be fixed to the wall or end grounds with countersunk screws, and a bead of silicone sealant applied to the channel (see fig. C).
- Apply silicone sealant to the channel of the second profile and attach it to the long edge of the first **polyPANEL**.
- Apply high grab adhesive to the reverse of the **polyPANEL** (see fig. D), angle into the first profile and push firmly against the wall (see fig. C).
- Continue the above steps to work around corners, finishing with end caps if required (see fig. E).

figure.B



5. FITTING TONGUE AND GROOVE PANELS

Tongue and groove panels should be dry jointed prior to final installation to ensure a sufficiently flush and tight joint will be achieved between all panels.

- Tongue and Groove panels can be bonded to the wall with high-grab adhesive, or screw fixed through the recess in the groove profile. Screws should be at 400 – 600mm centres with the bottom screw a maximum of 35mm from the bottom edge of the panel.
- polyPANEL** is supplied with a tongue and grooved edge as standard. When fitting panels into corner and end cap profiles, the protruding tongued or grooved edge should be cut off (see fig. B).
- Bond the first panel to the wall or frame, with the grooved edge first (see fig. F). If screw fixing panels to the wall/frame, pilot bore the groove profile where screws are to be located. (failure to pilot bore may result in the panels splitting). Pack between back of panel and wall as necessary to avoid distortion to the tongue and groove joint when screw fixing. Fix through the back flange of the grooved edge with countersunk screws. Ensure that screws are turned until they are just under the flush to prevent any obstruction to the tongue of the next panel to be fitted.
- Apply masking tape to the two meeting edges of the decorative face to protect the surface. Apply a narrow bead (2-3mm) of silicone sealant to the front shoulder of the tongue (see Fig. G). Note – using too much silicone sealant will affect the tightness of the joint. Using too little may affect water-tightness.
- Angle the tongue of the next panel into the groove of the fixed panel.
- Remove the masking tape and ensure any excess silicone sealant is wiped from the decorative face immediately.

figure C.

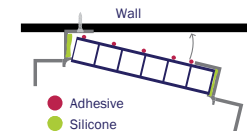


figure D.



figure E.

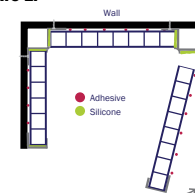


figure.F

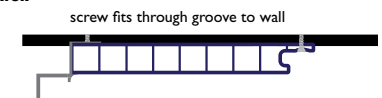


figure.G

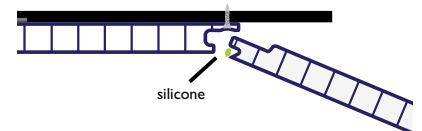


figure H.



6. SHOWER TRAYS AND BATHS

- polyPANEL** is compatible with **spaPANELseal**; the all-in-one kit for sealing the bottom edge of panels at a shower tray or bath. See separate installation guide.
- Alternatively you can fit **polyPANEL** with a 3mm gap between the bottom of the panel and the shower tray or bath, sealing the gap with silicone sealant. (see fig. H).

7. FITTING VALVES AND CONTROLS

When cutting apertures through **polyPANEL**, a 2mm clearance gap should be left around all edges, and sealed with silicone sealant.

8. ADHESIVE AND SEALANT

Soudal Fix All Classic adhesive is an all in one high-grab adhesive and sealant and is available to order with your panels.

9. AFTERCARE

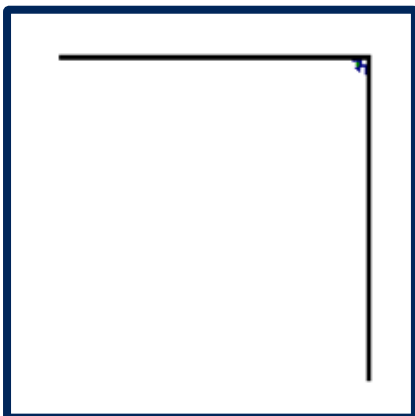
Once installed, your **polyPANEL** requires minimal maintenance. Panels should be wiped clean with soft cloth or sponge, using a mild, non-abrasive detergent.

CORNER INSTALLATION DETAIL

spaPANEL / tilePANEL / cleanPANEL / polyPANEL



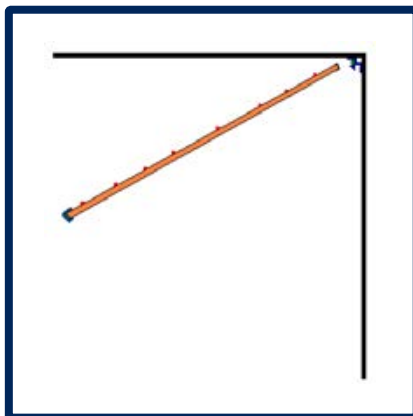
1.



Fit Internal Corner in corner (either glued or screw fixed).

Fill one side of internal corner with bead of silicone ready for panel.

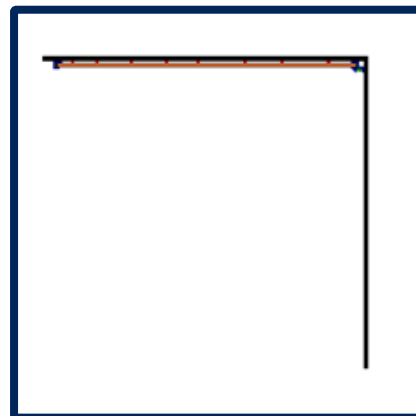
2.



Spread high grab adhesive on back of panel.

Fit end cap on panel with silicone cleaning excess of decorative face side.

3.



Push panel into internal corner and press against wall firmly, clean any excess silicone from corner.

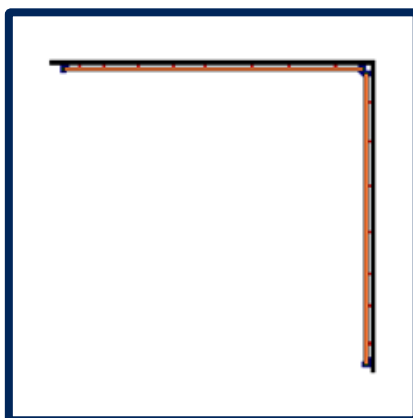
4.



Fill other side of internal corner with silicone ready panel.

Repeat steps 2 & 3

5.



Panels now ready for shower cubicle to be fitted if required.

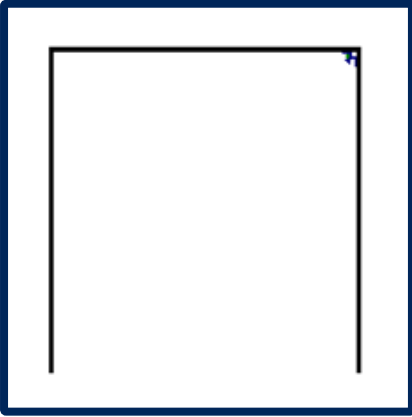
Please fix through panel into wall behind for secure fixing.

RECESS INSTALLATION DETAIL

spaPANEL / tilePANEL / cleanPANEL / polyPANEL



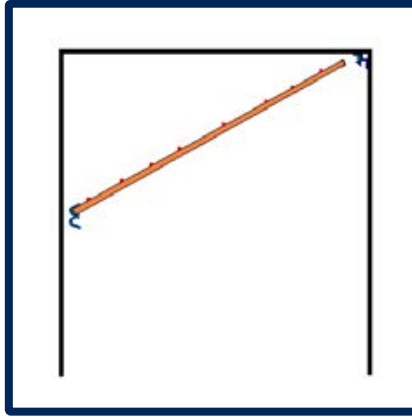
1.



Fit Internal Corner in corner (either glued or screw fixed).

Fill one side of Internal Corner with bead of silicone ready for panel.

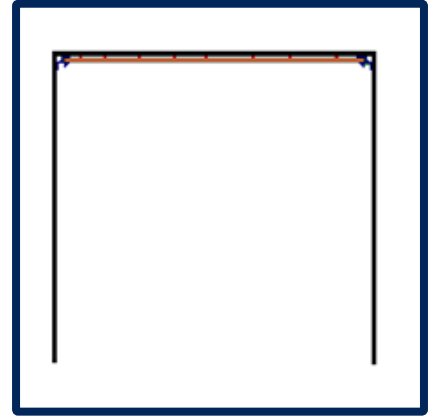
2.



Spread high grab adhesive on back of panel.

Fit Internal Corner on panel with silicone cleaning excess of decorative face side.

3.



Push panel into Internal Corner and press against wall firmly, clean any excess silicone from corner.

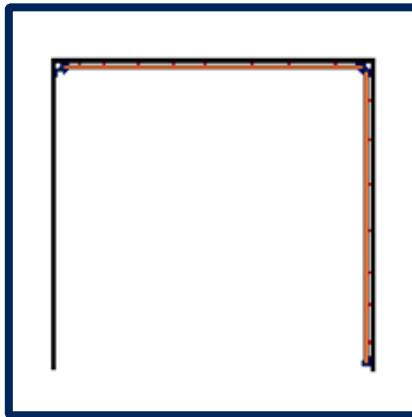
Fill other side of Internal Corner with silicone ready panel.

4.



Repeat steps 2 & 3, fitting an end cap if required.

5.

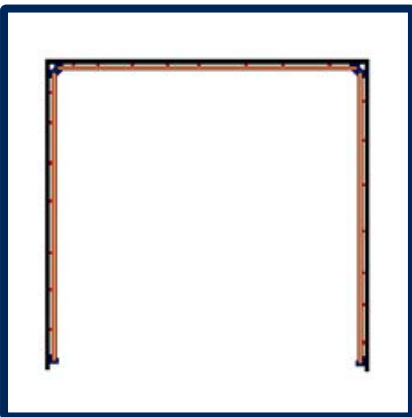


6.



Again repeat steps 2 & 3, fitting an end cap if required.

7.

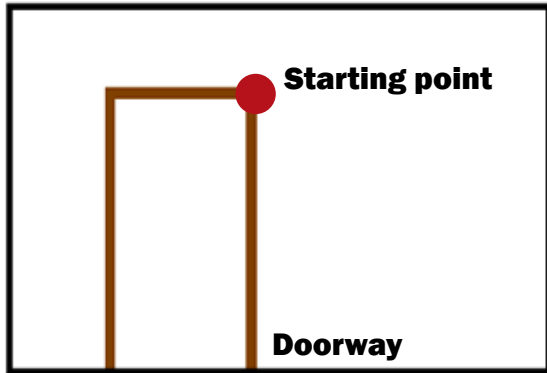


Panels now ready for cubicle door to be fitted if required.

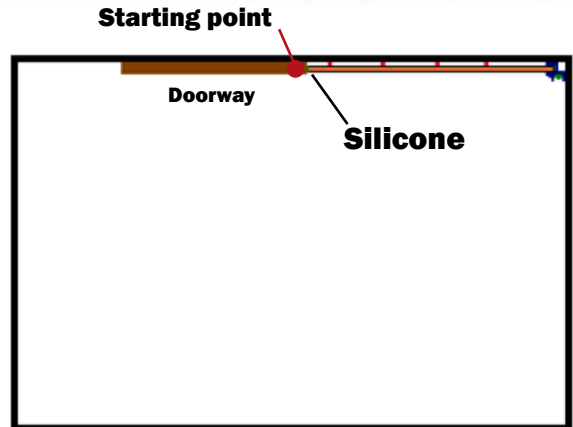
Please fix through panel into wall behind for secure fixing.

FULL ROOM INSTALLATION DETAIL

spaPANEL / tilePANEL / cleanPANEL / polyPANEL



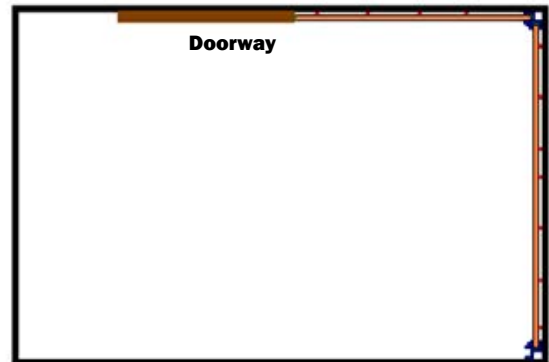
1. Starting at the side of the doorway working clockwise away from the doorway.



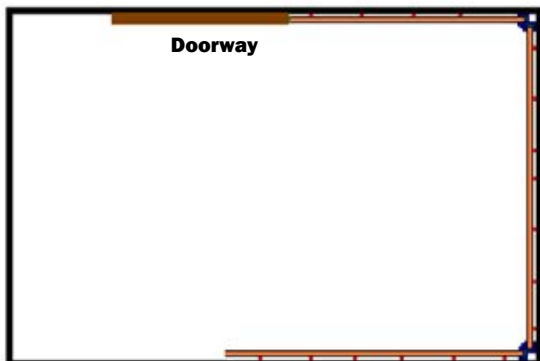
2. Silicone to top of doorway only then continue round room.



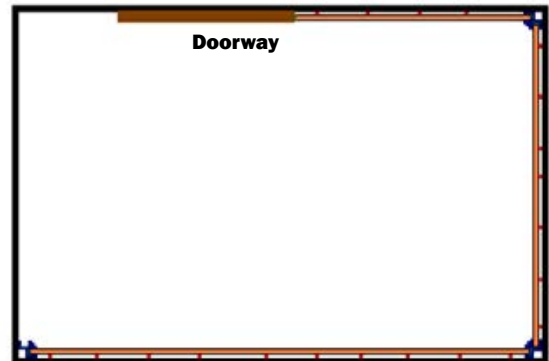
3.



4.



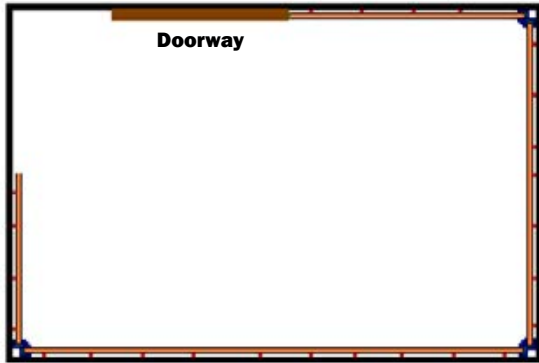
5.



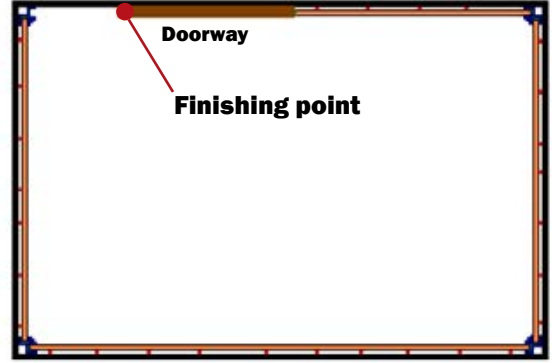
6.

FULL ROOM INSTALLATION DETAIL

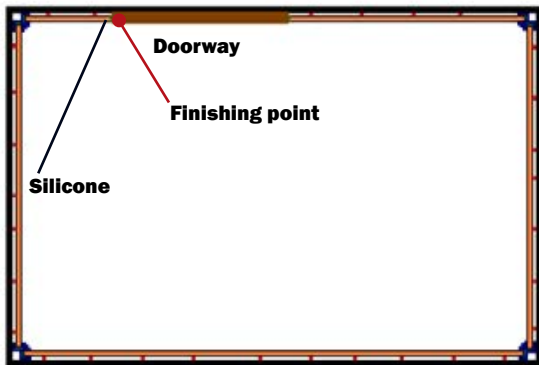
spaPANEL / tilePANEL / cleanPANEL / polyPANEL



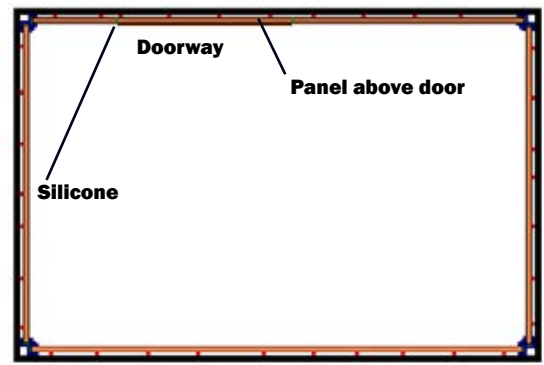
7.



8.



9. Silicone to top of doorway only, then cut panel for above door.



10. Panel above door should be cut accurately.
Joints to panels either side should be siliconed.